

Stairwell pressurization system, complete with fans, ducts, and control panel.

### DIFFERENTIAL PRESSURE SYSTEM

- Patented Solution
- SIL2 reliability level.

# FUMO<sup>®</sup> VENT

## SPVS

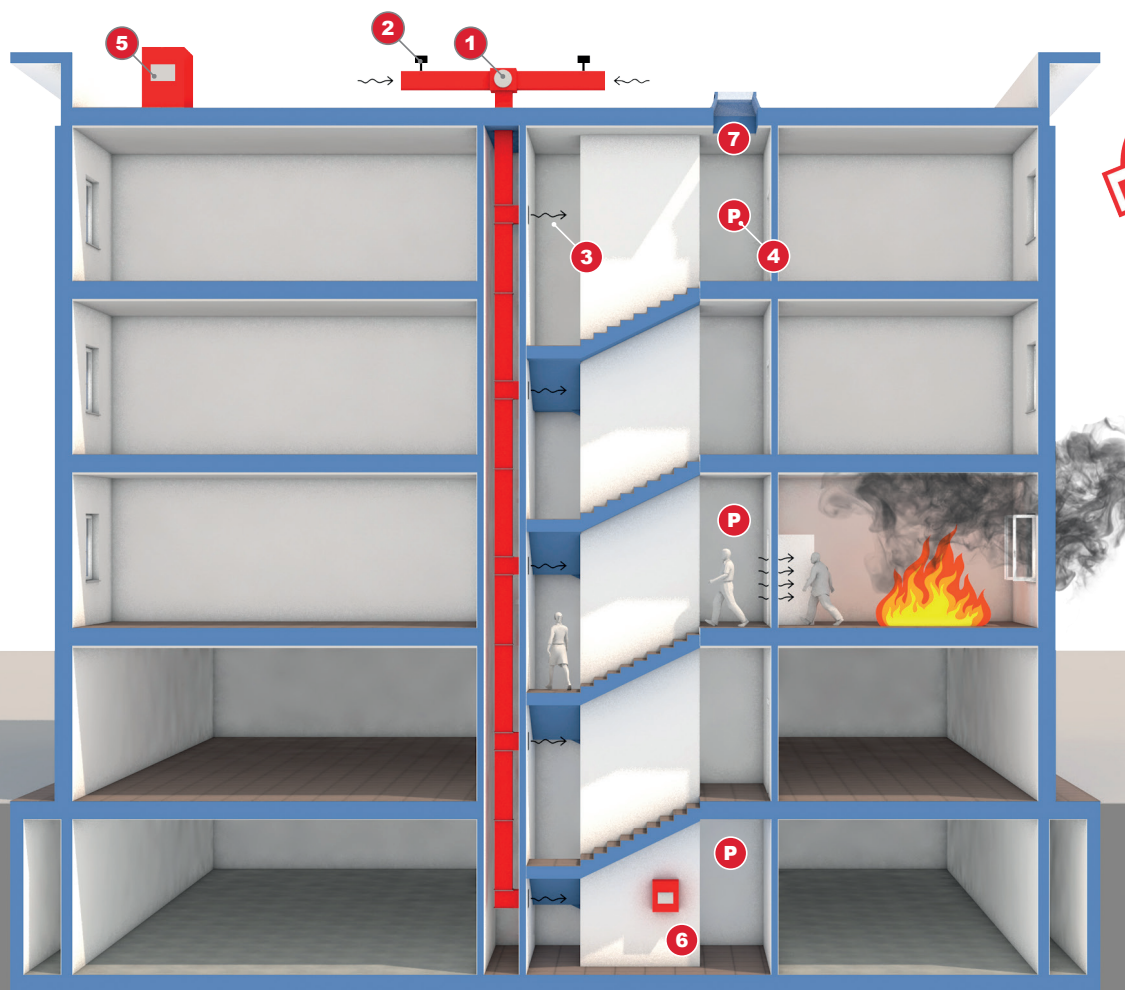


Ensuring safe and smoke-free escape routes for people is the primary goal of the FUMO VENT - SPVS system. Since smoke—not fire—is the leading cause of death during a fire, it is crucial to provide smoke pressurization and extraction systems

## REFERENCE STANDARDS

The purpose of pressurization systems is to limit the spread of smoke, preventing it from entering areas designated as protected, such as stairwells.

Reference standards: EN 12101-6 – EN 12101-13 | IEC61508



**SPVS**  
(Stairwell Pressurization Ventilation System)  
Differential pressure system with enhanced reliability

- 1 Air supply fan
- 2 Smoke detector sensor
- 3 Adjustable air inlet vents
- 4 Differential pressure switch

- 5 Fire Mode power control panel
- 6 SPVS control panel for Fire Department
- 7 Overpressure damper



# **| PATENDED SOLUTION**

The only differential pressure system with superior availability and SIL2 reliability level.

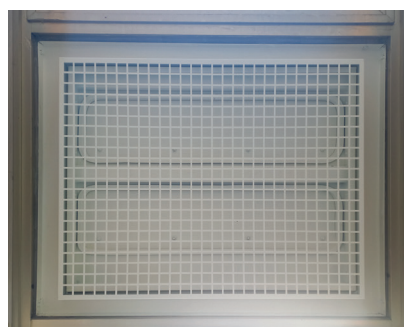
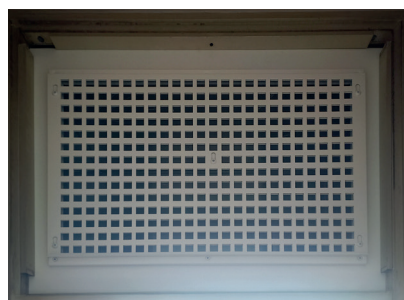
**SPVS**



**SINGLE AIR  
SUPPLY  
FAN**

**FANS  
WITH  
EC MOTORS**

**SIL2  
GUARANTEED  
SAFETY**



## **SPVS COMPONENTS:**

- 1- Air Supply Fan (Special Air Supply with Redundant Motors EC).
- 2- Smoke sensor for duct
- 3- Duct with B-CONTROL (Grid calibrated for correct Air inlet)
- 4- Pressure Control
- 5- Air Release
- 6- MAIN CONTROL UNIT (With PLC SIL3)
- 7- Firefighters Manual Control.





[www.estrazioneufumi.it/en/home.html](http://www.estrazioneufumi.it/en/home.html)



**ROSSO OFFICINE S.r.l.**

Address: Via Mondovì, 63 - Morozzo (CN) I - Italy  
Phone +39 0171 77 20 44 - Fax +39 0171 77 24 68  
info@rossoofficine.it  
[www.rossoofficine.it](http://www.rossoofficine.it) - [www.estrazioneufumi.it](http://www.estrazioneufumi.it)  
C.F e P.IVA 02698130040  
C.C.I.A.A. CN N. 229347  
Reg Impr. Cuneo 02698130040

**FUMO  
VENT**

**SPVS**

